

Welcome to Conesby Data Centre Campus Consultation Event

Rivington Energy is preparing a planning application for a data centre campus off Normanby Road, Scunthorpe. The project known as 'Conesby Data Centre Campus' will comprise state of the art data centres that will be partly energised by a purpose built, on-site, solar farm. The clean, green energy generated, will support a cost-effective and resilient energy supply to the data centres.

The planning application for Conesby Data Centre Campus, will incorporate both the data centres and the solar element, and will be submitted to North Lincolnshire Council in the Summer of 2026.

The Conesby Data Centre Campus aligns with the vision for the Northern Lincolnshire AI Growth Zone - a major infrastructure initiative aimed at turning the area into a leading hub for artificial intelligence (AI) creating jobs and inward investment. Once constructed the Conesby Data Centre

Campus will equate to an investment of over £2 billion.

Over the construction period it is anticipated 400-600 direct jobs will be created with a peak on-site workforce of approximately 125 workers. Local businesses in North Lincolnshire and the broader region will be well placed to tender for supply chain opportunities.

Once operational, the project is expected to create around 20-30 full-time, long-term highly skilled jobs.

The project also aligns with North Lincolnshire Council's 'Green Future' strategy with the solar element supporting the area's ambition to increase investment in renewable energy production.



400-600 jobs during construction.



Please speak to a team member for more information.

CGI of the proposed Conesby Data Centre Campus



Rivington Energy



Rivington Energy website



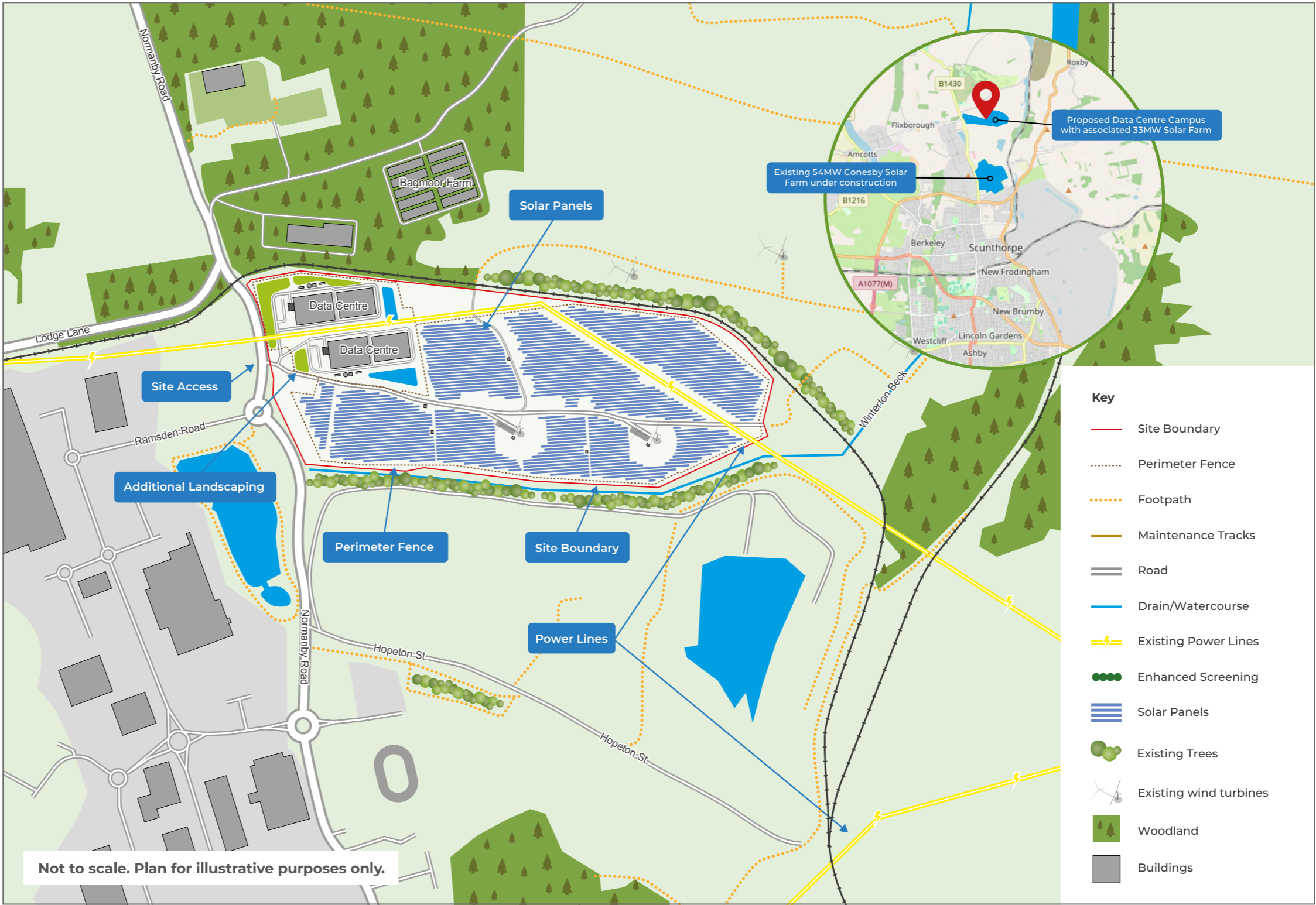
Conesby Data Centre website

Site location and layout

The Conesby Data Centre Campus site lies on the northern edge of Scunthorpe covering approximately 20 acres. The planned adjacent solar farm will sit on around 80 acres.

Associated solar farm up to 33MW displacing up to 6000 tonnes of CO₂ from fossil fuel sources every year of its operation.

Contribute over £2.6 million annually in business rates to support local services.



Environmental Assessments – Data Centre

Size & footprint

The data centre buildings will have a maximum height of approximately 26 metres and individually will have a footprint of approximately 12,500m² including plant gantries and ancillary buildings.

Biodiversity & landscaping

The Campus will benefit from professional Landscaping Plan and a Biodiversity Net Gain Plan. Both will ensure there is a significant uplift to biodiversity on site.

Water cooling system

The state-of-the-art data centres have been designed with closed loop cooling systems which, once operational, have minimal water requirements and do not require a constant water supply or the constant evaporation of water.

Ecology

- A full Ecological Assessment is being undertaken and will be submitted as part of the full application.
- The site comprises predominantly arable land with limited field margins separating the site,

these are considered to be of low ecological value. The most valuable ecological features of the site are the hedgerows and mature trees of the boundaries. All of these features are to be kept and strengthened where necessary.

- The ecological surveys will map habitats present, record notable features of ecological value, and assess the potential for protected and priority species, such as skylarks.

Flooding and Drainage

- The application site lies partially within Flood Zone 1, defined as land with a low probability of flooding. The majority of the site is at 'very low' risk of flooding from all sources.
- The proposed data centre campus development will use Sustainable Drainage System (SuDS) methods. This will be incorporated across the site in the form of interception swales, permeable storage and ponds to naturally slow the surface water runoff in the case of high rates of rainfall.
- The Flood Risk Assessment will form part of the full application. The overall conclusions drawn are that the development will not increase flood risk elsewhere in the borough and will actively reduce flood risk on site.

Noise

Noise surveys and modelling are being undertaken to ensure that the proposed campus would not have an adverse impact on the local environment and any sensitive receptors nearby. Where necessary the final proposed design will include mitigation to ensure that there is no significant increase in noise in the area.



3D Data Centre views



Rivington Energy[®]



Rivington Energy website



Conesby Data Centre website

Environmental Assessments - Solar

The proposed solar farm will have a capacity of around 33MW and will be operational for the lifetime of the data campus. The power generated will be used directly by the Conesby Data Centre Campus.

The solar panels will be installed in rows which run east to west through the site. These rows will be tilted towards the south to capture the maximum amount of solar irradiation possible. The total height of the panels will be no more than 3m above the ground with a gap of more than 0.8m above the ground at its minimum.

Small electric cabins will be located amongst the panels and these will be accessed by a network of crushed stone track which will run through the site. All of the panels will be surrounded by a security fence to protect the equipment from large animals and unauthorised users entering the site. CCTV cameras will be located periodically around the site perimeter for security.

Ecology

- A full Ecological Assessment is being undertaken and will be submitted as part of the full application.
- The site comprises predominantly arable land with limited field margins separating the site, these are considered to be of low ecological value. The most valuable ecological features of the site are the hedgerows and mature trees

of the boundaries. All of these features are to be kept and strengthened where necessary. The ecological surveys will map habitats present, record notable features of ecological value, and assess the potential for protected and priority species, such as skylarks.

Flooding and Drainage

- The application site lies partially within Flood Zone 1, defined as land with a low probability of flooding. The majority of the site is at 'very low' risk of flooding from all sources.
- The proposed solar development will use Sustainable Drainage System (SuDS) methods. These will be incorporated across the site in the form of interception swales to naturally slow the surface water runoff in the case of high rates of rainfall.
- Solar panels are raised to a height to allow grass sward to grow underneath, this allows rain to infiltrate into the ground at the same rate as currently.
- The Flood Risk Assessment will form part of the full application, but the overall conclusions drawn are that the development will not increase flood risk elsewhere in the borough and will actively reduce flood risk on site.

Cultural Heritage

There are no sensitive heritage assets within the site. Normanby Hall is approximately 1.2km to the north and is well screened by the existing landscape features. The proposed design will carefully consider and mitigate any impact to cultural heritage assets within the area.

Agricultural Land

The land is designated as Grade 4 Agricultural Land, the least versatile land for farming. We are undertaking Agricultural Land Quality surveys to understand the makeup and quality of the soil and farming potential. Any proposed solar would seek to improve the quality of the soil and protect the land for farming in the future if solar was no longer required with future technologies.

Footpath and bridleways

There are no footpaths or Bridleways across or within the site.

Existing wind turbines

There are two existing wind turbines on the site. These are out-with the proposed Data Centre Campus development area. There will be a buffer zone of approximately 135 metres between the centre column of each turbine and the solar panels.



**Rivington
Energy**[®]

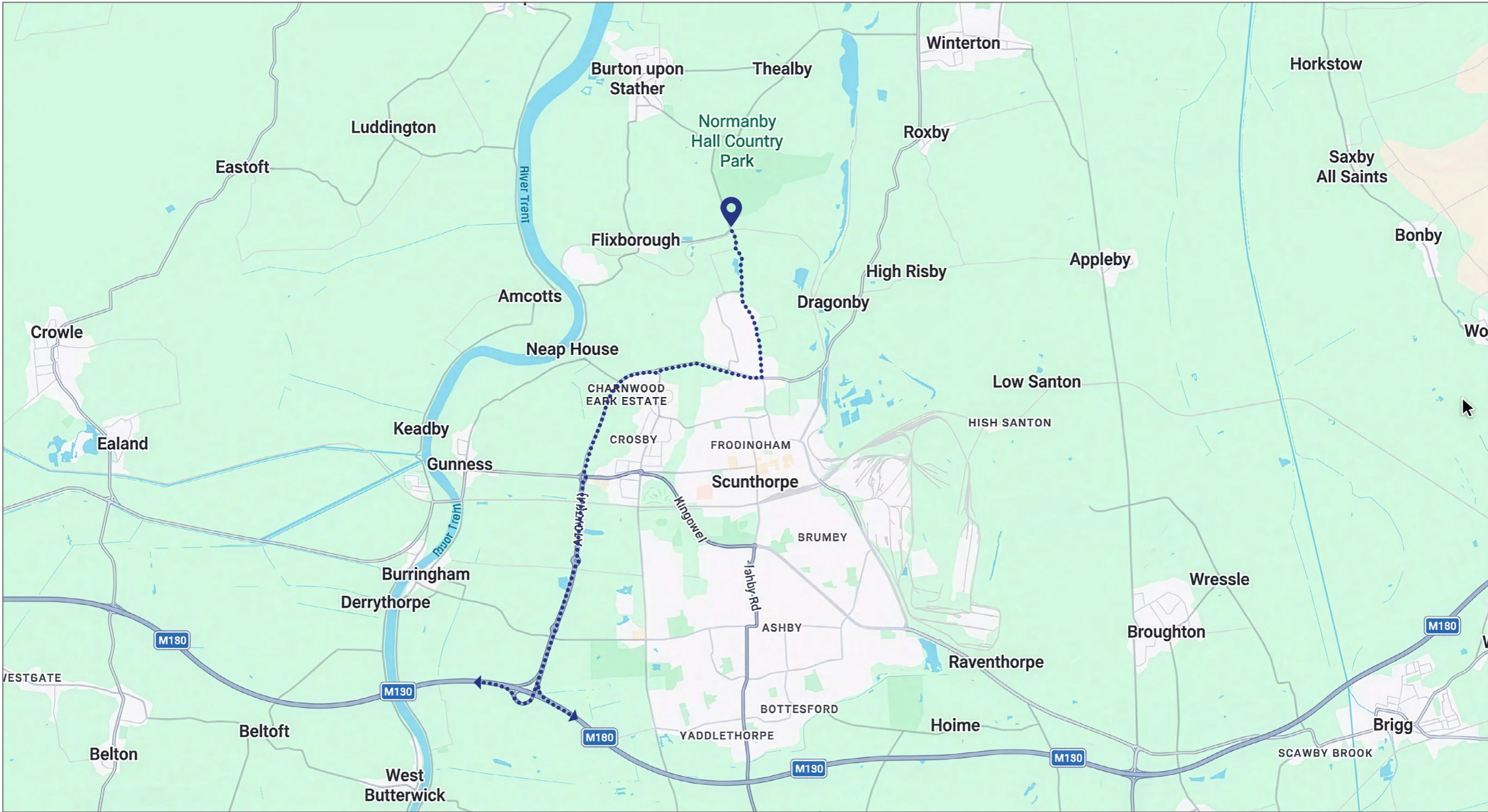


Rivington Energy
website



Conesby Data Centre
website

Transport and construction plan



This transport map is applicable to both the data centres and solar elements of the Conesby Data Centre Campus.



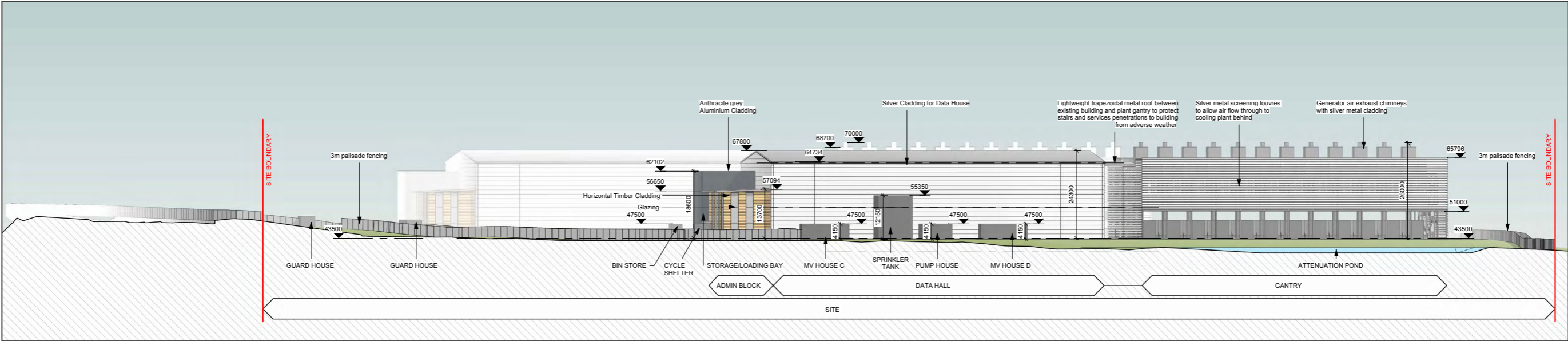
Rivington Energy website



Conesby Data Centre website

Data Centre Site Section Drawings

Site Section 1



Site Section 2

